

## PELVIC FLOOR STIMULATORS

### EV-807P Digital TENS/NMES for Incontinence

#### Special Features

- Dual channel
- Adjustable pulse width – 30 to 300  $\mu$ S
- Adjustable pulse rate – 1 to 150 Hz
- Variable timer option – 1 - 60 minutes or constant
- Adjustable contraction time – 1 - 30 seconds
- Adjustable relax time – 1 - 60 seconds
- Adjustable ramp time – 1 - 6 seconds
- Adjustable amplitude – 0 - 100 mA
- Wave form - asymmetrical rectangular biphasic pulse



The Aspire is a preprogrammed Incontinence Stimulator used for pelvic floor stimulation. It is intended for the treatment of male or female incontinence



### Foundation Aspire Incontinence Stimulator

#### Special Features

- Single channel
- Adjustable amplitude – 0-80mA
- Automatic shut off after 1 minute if not used
- Five preset programs for treatment of urge and stress incontinence and maintenance of pelvic floor



#### Accessories

- x 1 lead wire
- x 1 vaginal probe
- x 2 batteries
- x 1 ribbon
- x 1 instruction manual
- x 1 soft pouch

#### Ordering details

EVE110 Digital TENS/NMES for Incontinence EV807P

#### Ordering details

EVE235 Foundation Aspire Incontinence Stim EV807E

 **HOTLINE**  
**1-877-440-3182**  
 Fax (780) 417-5110

### Adapters for EMG/EMS Systems

Pure Care carries a number of adapters to make our accessories and probes compatible to your system. Please call to discuss any adapter you may need.



ADP005



ADP010



ADP015



ADP020



ADP025

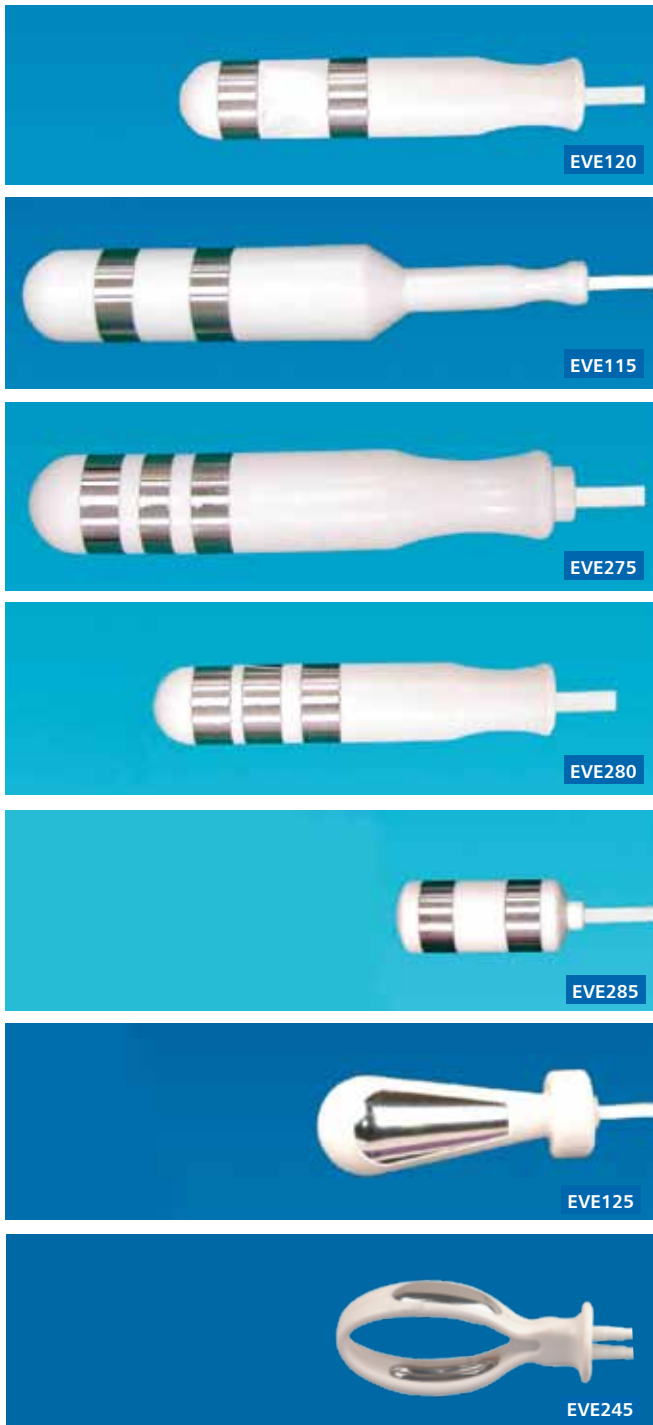


ADP030

# Biofeedback and Pelvic Floor Devices

The **FOUNDATION**® range of rectal and vaginal sensors are offered again with an increase in the number of styles available for you to choose from. To satisfy the needs of all practitioners, we have researched the many different techniques and the electrodes used by many therapists. All probes are adaptable to your equipment, see previous page for adapters shown or call our help desk.

## Vaginal Sensors

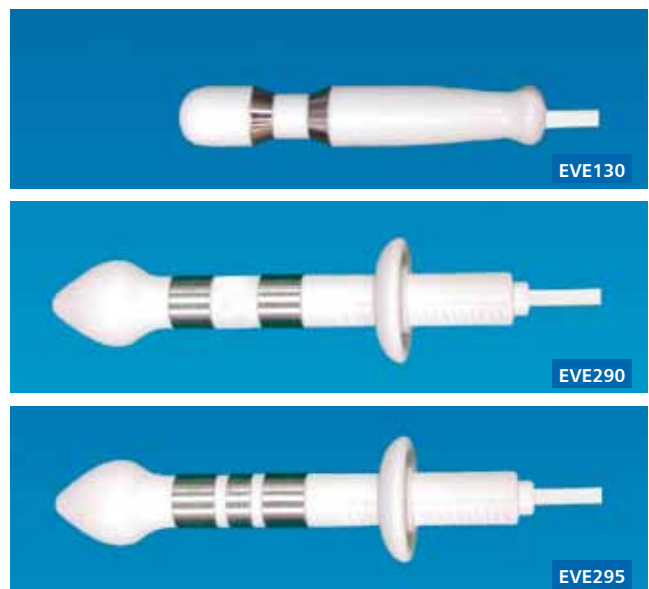


### Ordering details

- EVE120 Foundation PRV04 Vaginal Probe (L) 4", 3/4" dia.
- EVE115 Foundation PRV03 Vaginal Probe (L) 5.75", 1" dia.
- EVE275 Foundation PRV10 Vaginal Probe (L) 5.5", 1" dia.
- EVE280 Foundation PRV11 Vaginal Probe (L) 4", 3/4" dia.
- EVE285 Foundation PRV14 Vaginal Probe (L) 2", 3/4" dia.
- EVE125 Foundation PRV02 Vaginal Probe (L) 3", 1 1/8" dia.
- EVE245 Foundation Aspire Vaginal Probe (L) 3 1/8", 1.5" dia.

 **HOTLINE**  
**1-877-440-3182**  
 Fax (780) 417-5110

## Rectal Sensors



### Ordering details

- EVE130 Foundation PRX Anal Probe (L) 3.25", 5/8" dia.
- EVE290 Foundation PR13 Anal Probe (L) 4.25", 3/4" dia.
- EVE295 Foundation PR12 Anal Probe (L) 4.25", 3/4" dia.



## CLINICAL EMG SYSTEM

### Dual Channel Electromyograph

New clinical dual channel EMG offering easy operation and large, bright bar graph displays which are easily visible from several metres making this the ideal clinical EMG

#### Features

- On/Off power button: Soft touch power On and Off control.
- Dual Bargraphs: Bright 35 Segment LED bargraphs for displaying EMG voltage in 'analog' format, visible several metres away from unit.
- Threshold Dials: Rotary dials for quick and intuitive adjustment of threshold levels.
- Training Bargraphs: A 35 Segment LED bargraph, shows Work/Rest cycle, and can be used as a 'follow me' training aid.
- Select button: selects therapy parameters for data entry.
- Set-Adjust Dial: data entry encoder - rotate clockwise for increase, or conversely for decreasing data.
- Set-up Indicators: The six Set-up indicators are arranged in order for getting started quickly.
- Therapy Start/Pause button: To Start and Pause therapy.
- Statistics Indicators: After the treatment has concluded, treatment statistics can be viewed simply by scrolling back and forth through the Statistics Indicators.

#### Ordering details

ELE989 Clinical EMG System

*Supplied with the following accessories:*

ELE984 Electrode Cables (White)

ELE985 Electrode Cables (Blue)

ELE986 Reference Cable (not shown)  
Pre gelled EMG Electrodes (25 pack - starter pack)

ELE983 Hospital grade power cord

#### Replacement Items and Optional Accessories

ELE984 Patient cable - white

ELE985 Patient cable - blue

ELE983 Power Cord hospital grade

ELE990 Reference cable

TTL045 Uni-Gel Reference  
Electrodes 100/bag

TTL030 Strip EMG Electrodes  
100/bag

TTL035 Triode Snap Electrodes  
100/bag



# Biofeedback and Pelvic Floor Devices

## PFX2

The PFX The PFX2 (for women) helps take the uncertainty out of pelvic floor exercises. After the birth of the first baby, many women suffer some degree of incontinence. Scientific studies have proven the effectiveness of pelvic floor exercises. If your patients have ever tried to do pelvic floor exercises and wondered whether they are doing them properly (or at all!) they will wonder no more. The PFX2 gives visual feedback to show that they are doing the exercises and achieving something.

How does it work? An indicator gives feedback from a vaginal sensor showing the strength of the contraction of the pelvic floor muscles.

The PFX2 Kit contains:

- The PFX2 indicator
- The vaginal sensor
- The 80cm (31 inch) connecting tube
- A handbook with comprehensive instructions

## PFXA (anal sensor)

This product is useful for women suffering from fecal incontinence (and also from uncontrolled flatulence) and also for men suffering the same conditions. Men suffering from urinary incontinence post prostate surgery may also use this product for biofeedback to help regain control.

In operation, air pressure in an anal sensor produced by a pelvic floor contraction is transferred by a tube to the PFX indicator unit where its strength is displayed on a 0-12 scale.

PFXA is a high quality product that is recommended by colo rectal surgeons, nurses, physiotherapists and stomatherapists in many countries for use by those who would benefit from feedback when performing pelvic floor exercises.

The PFXA Kit contains:

- The PFXA indicator
- The anal sensor
- The 120cm (48 inch) connecting tube
- A 14 page handbook with comprehensive instructions

**PFX2 and PFXA is a long term investment in fitness and good health.**

## What a system!

Peritron and PFX employ the same sensor. A person may bring the PFX sensor to the clinic to be assessed with Peritron thereby eliminating the risks associated with multi-user sensors and saving the practitioner the responsibility and inconvenience of disinfection.

The contact surfaces of the Vaginal and Anal sensors are both of moulded seamless silicone rubber that tests negative for cytotoxicity, allergenic potential/sensitization and mucosal irritation. The latex sensors of other manufacturers would fail these tests comprehensively. Unlike latex, our silicone rubber probes may be autoclaved - the gold standard for killing bugs.

Both instruments have been made especially sensitive at low scale readings to respond to the weakest contractions. A client assessed to be '1 out of 5' by digital examination (a very weak contraction) would light 2 of the 7 bars on the Peritron display when in feedback mode.

Peritron and PFX work as a team - Peritron in the clinic and PFX at home to:

- help discover how to flex elusive pelvic floor muscles
- measure improving strength
- announce when reached fitness goal
- quickly indicates to use, qualify of PF muscles



### Ordering details

- 1 CAR500 PFX<sup>2</sup> Vaginal pressure Biofeedback Unit
- 2 CAR520 PFXA Anal pressure Biofeedback Unit
- CAR515 Extra long 50" tube kit for vaginal probe
- CAR525 Extra long 50" tube kit for anal probe



### Ordering details

- 1 CAR510 Vaginal Pressure Sensor
- 2 CAR530 Anal Pressure Sensor

# Biofeedback and Pelvic Floor Devices

The Peritron is a high-tech version of the PFX. It can be used with either anal or vaginal sensors. The vaginal sensor can be inflated, thereby increasing the diameter and the firmness. This is useful when training the PF muscles for much greater strength. The reading is very accurate in cm/H<sub>2</sub>O, and gives a reading of a much weaker contraction. For this reason the Peritron is the preferred option in a clinical and research setting.

Precision Perineometer for accurate assessment and super sensitive feedback.

Peritron is a hand-held clinical Perineometer intended for assessing the strength of pelvic floor (PF) muscles and teaching pelvic floor exercises. Both vaginal and anal sensors are available.

In operation, air pressure in the sensor caused by a pelvic floor contraction is transferred by a tube to the readout unit where it is displayed in several ways.

**Precision Perineometer for accurate assessment and super sensitive feedback.**



**Peritron (Vaginal Sensor)**



**Peritron (Anal Sensor)**

## Technical

Peritron 9300 is a microprocessor-controlled Perineometer that measures the strength of pelvic floor muscle contractions by sensing the pressure of air in a vaginal or anal sensor. The pressure is displayed either numerically in centimeters water pressure or as a multi-range analogue bar-graph.

Peritron is supplied in a moulded case with sensor, connecting tube and handbook. There are two versions:

- Peritron 9300V incorporates a vaginal sensor
- Peritron 9300A incorporates an anal sensor

## Operating Range

- 0-300 cm water pressure

## Accuracy

- 95% of readings are exact. 5% are exact  $\pm$  1cm

## Numerical Readout

- Large liquid crystal display shows contraction strength in cm water pressure
- Auto-zero function provides zero-based readings
- Recalls peak and average readings and the duration

## Analogue Readout

- Three-range bar-graph display for exercise feedback

## Vaginal Sensor of 9300V

- 26-28mm dia., 55mm long, active surface, 108mm overall with thin wall, precision moulded medical-grade silicone rubber sheath

## Anal sensor of 9300A

## Carry case Auto-off

## Maintenance

## Warranty

- 80 connecting tube with port for optional inflation to 100cm water
- 15-19mm dia., 30mm long, active area, 30mm dia. flange, 80mm overall with medical grade silicone rubber sheath
- 120cm connecting tube
- Moulded 23 x 17.5 x 5cm
- Function operates after four minutes of no change of pressure
- 1 x 9V PP3 alkaline cell accessible to user. Life > 100 hrs.
- Peritron requires no user adjustments or calibration
- Peritron is warranted to be free of defects for 12 months

## Ordering details

**CAR505** Peritron Vaginal pressure Biofeedback Unit

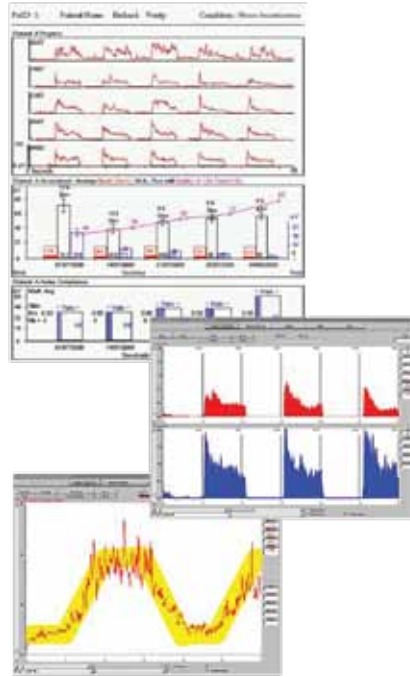
**CAR540** Peritron Anal pressure Biofeedback Unit

# Biofeedback and Pelvic Floor Devices

## NeuroTrac ETS EMG-Triggered Stimulation, EMG Biofeedback and Neuromuscular Stimulation

### Features

- Dual channel EMG and neuromuscular stimulation
- Multilingual PC database system
- Used as an EMGBiofeedback training aid or as a diagnostic tool
- Automatic and manual threshold setting in the EMG triggered stimulation mode (ETS)
- Designed to be used for a wide range of physiotherapy applications
- Produces and prints comprehensive patient progress reports of EMG work/rest averages, onset contraction and muscle release times, peak values, work/rest average current mA used and time of stimulation
- Monitors week to week change in Quality of Life (QOL)
- Easy to use software



### Ordering details

AUS005 NeuroTrac ETS Biofeedback

AUS010 Software for ETS

## U-Control

Biofeedback device for patients and healthcare professionals for muscle re-education and the treatment of urinary and fecal incontinence.

- includes earphone for privacy
- offers three settings for sound
- sensor connection
- features two scales for a wide range of muscle activity
  - .2 - 37.5 microvolts (x1)
  - .6 - 112.5 microvolts (x3)
- adjustable volume control
- offers wide variety of threshold settings
- letter scale tracks patient progress
- bar lights provide instant feedback
- handy wrist strap
- minimizes electrical interference from outside sources
- filters out the heart's electrical activity
- operates with a 9 volt battery
- features 5 or 10 second work/rest option



### Ordering details

TTL040 U-Control



### Ordering details

1. TTL055 Vaginal Sensor

2. TTL005 Anal Sensor

### Other accessories for U-Control:

1. TTL045 Uni-gel electrodes (100 per bag)

2. TTL010 Surface biofeedback extender cable

3. TTL030 Single EMG Electrodes Strip of 3. 100/bag

4. TTL035 Triode Electrodes Bag of 100



1



2



3



4